

# ST. HENRY COMMUNITY PICNIC

**[ JULY 2016 ]**  
**1ST, 2ND AND 3RD**

## *D&R Shows For Entertainment • Bands/Live Music*

*Pre-Picnic Movie Thursday Night ; The Good Dinosaur – FREE Popcorn from Auxilary-weather permitting*

### **Friday July 1, 2016**

**5-9:30pm Kart Races** Practice 5:00, Qualifying at 6:30, Race at 7:30

**7:00pm Rides, Games, Food, Bingo & Picnic Stands open**  
*(Rides for all ages. Presale wristbands available at Gels IGA & St. Henry Bank. Ride all day bands available for each day.)*

**7:00pm St. Henry Volunteer Fire Dept. Bucket Brigade**  
Registration 6:30-7pm on Main Street – Pre-Register by emailing shfd@bright.net, 6 member team, 2 divisions Firefighter/non firefighter, \$10 Team Entry Fee

**9pm-12:30am Live Band – NIGHTFALL**

### **Saturday July 2, 2016**

**8:00am Steeplechase Bike Tour** 15, 20, 30 mile routes Registration 7am at SH High School parking lot. Pre-Registration is available visit [www.sthenrybank.com](http://www.sthenrybank.com) to download entry form, register before 6/22/15. Cost: \$22 entry fee (includes t-shirt) \$10 without t-shirt, \$12 day of race

**4:00pm Church Services** (St. Henry Catholic Church)

**5:15pm Opening Ceremonies** by the American Legion Post 648 & The Award Winning Saint Henry High School Band

**2:30-8:30pm Kart Races** (2:30 practice, qualifying at 5:30 and race at 6:30)

**5:30pm Rides, Games, Food, Bingo & Picnic Stands open**

**9pm-12:30 am SAW CREEK**

### **Sunday July 3, 2016**

**8:45am Redskin Classic 5K Run/Walk** (Registration 7:30-8:30 at SH High School)

**12:00pm Rides, Games, Food, Bingo & Picnic Stands open**

**12-4:00pm Petting Zoo** Located by the southwest fence by the Kart Racing

**1- 3:00pm AL BEST BAND** square dancing & music-Sponsored in part by The Heritage Club

**1:00pm Tractor Pull**

**1:30pm Weight Lifting Display** (by St Henry Football Team)

**1-5:00pm Firecracker Cruise-In** (Registration beginning at 1)

**3:00pm Talent Show**

**3:30pm Dodge Ball** (Registration 3-3:30 @ dodge ball cage behind library)

**4pm-?? Chicken BBQ** (By Rocky Bernard, served at the K of C Hall – No Presale, first come – first served)

**5-8:00pm ROGER DEMANGE**

**9:00pm Raffle Drawing**

**8-11:00pm KAITLYN SCHMIT**

**GREAT FOOD & ENTERTAINMENT!**

 Find us on Facebook

# LIVE ENTERTAINMENT



**Friday July 1, 2016**

9:00pm - 12:30am - Nightfall



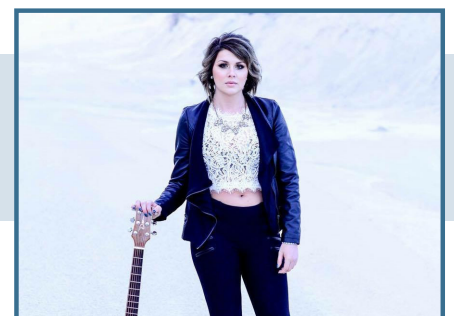
**Saturday July 2, 2016**

9:00pm - 12:30am - Saw Creek



**Sunday July 3, 2016**

5:00pm - 8:00pm - Roger DeMange



**Sunday July 3, 2016**

8:00pm - 11:00pm - Kaitlyn Schmit

THANKS TO ALL THE ORGANIZATIONS, INDIVIDUALS, AND SPONSORS FOR MAKING THIS EVENT POSSIBLE EVERY YEAR.