



Romer's Catering  
September 11, 2013

Vice-President Bob Homan called the meeting to order.

John Yoder motioned to approve the August 14, 2013 Minutes, seconded by Lisa Niekamp-Urwin. Motion carried.

Treasurer's Report:

David Romer stated \$271.92 is the checking. Other account is approximately \$40,000. Chamber made \$5,600 from the final numbers at the picnic.

Old Business:

There was no discussion of old business.

New Business:

1. Chuck Stammen brought up any new fundraisers. Discussion of Chamber Dollars vs. monetary dollars. Chuck will let the committee know that is how we want to move forward.
2. Discussion of moving Sunday picnic time from 4 pm to 11 pm to 1 pm to 9 pm. David Romer needs to discuss with Picnic committee.
3. Lisa Niekamp-Urwin brought up PACE Center at Mercer County Fairgrounds. Lisa Niekamp-Urwin is part of the team to get this built. They need 5 million to get it built. Looking for donations really soon. Three major sections to the building including an educational wing. Wright State will be leasing some of the space for educational purposes. The goal would be to get any donation from every business in Mercer County. More information is attached to these meeting minutes.
4. Julie wanted to know if the Chamber was interested in donating in the past for advertisement in the penny saver for St. Henry Christmas open house. Chuck Stammen motioned to donate the same amount as last year which was \$375.00. Frank Urwin seconded. Motion carried.
5. There was a discussion about making some members trustees and requiring attendance. Voluntary involvement would also be allowed. There was additional also a discussion about having a different type of event to attract other members and getting speakers may help.

6. There was a discussion of bringing back St. Henry Square Dance. Emily Gast-Schlater will get Chamber all necessary information regarding the square dance.
7. There was a discussion of bringing back the Taste of St. Henry. Charlie Gels and Ron Rindler will get us the information for the event.
8. There was a discussion of St. Henry Chamber T-Shirts for the Bucket Brigade. July 4<sup>th</sup>.
9. Lisa Niekamp-Urwin won a pot of gold.
10. There was a discussion about helping high school students out with prepping for the real world. This would entail the coordination of a mentoring program and job shadowing.

Matt Lammers motioned to adjourn and Chuck Stammen seconded. Motion carried.

Thanks John Yoder for stress relief. Next month will be sponsored by St. Henry Bank. October will be sponsored by St. Henry Tile.

Next meeting is October 9, 2013.

Sincerely,

*Matthew C. Lammers*

Secretary

# PACE Center

Western Ohio has a rich agricultural heritage. Mercer County was settled by German farm families beginning in the early 1800's investing in the fertile farmlands. The local communities grew and prospered due to hard work, strong communities, and a focus on the future.



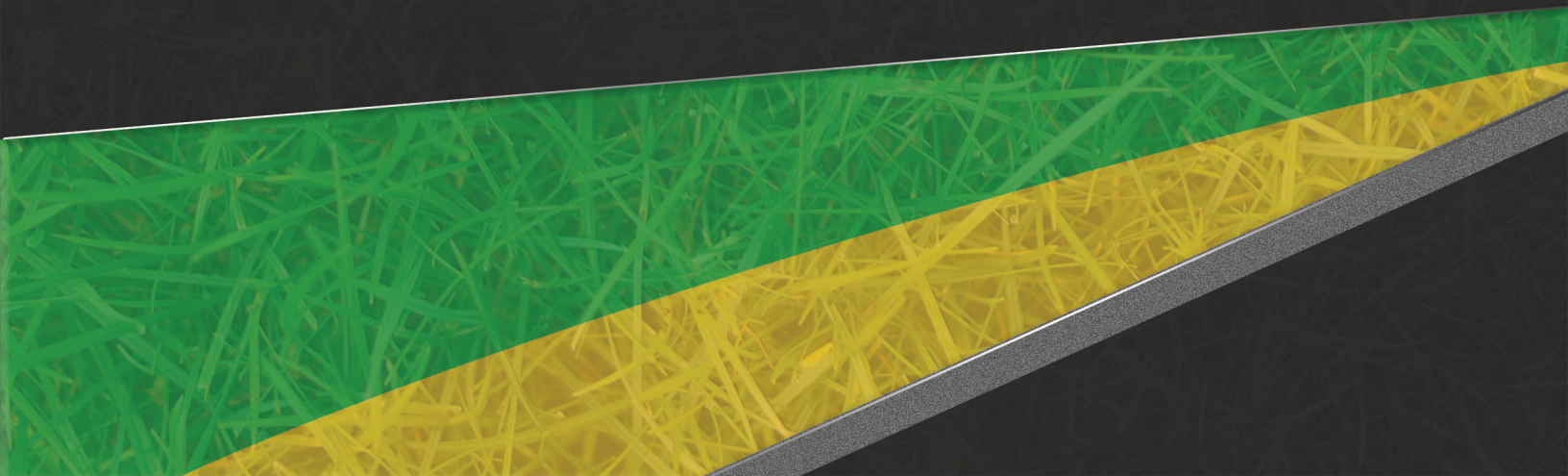
Agriculture has advanced with the introduction of new technologies, new products, and new methods. Today agriculture contributes over \$400 million annually to the Mercer County economy, making it the number one agriculture county in the state of Ohio. Neighboring counties also have strong agriculture industries, with the region leading in livestock production, agronomy, food manufacturing, and sales and services of agriculture. Over 10,000 residents are employed in the western Ohio region in production, processing, agriculture finance, marketing, transportation, and other agriculture careers.



The Mercer County Fairgrounds is a sixty acre facility with a variety of buildings utilized throughout the year to service local community groups and residents. The annual county fair annually highlights the importance of agriculture, community groups, and Junior Fair organizations to the general public. Over time these facilities need updates and improvements to not only continue to

meet local needs, but to service growth and changing community needs.

Wright State Lake Campus has been providing post-secondary education to Western Ohio residents for over 50 years. Today the college has grown to serve over 1,400 students with a mixture of Associates and Bachelor's Degree programs of study. Agriculture was introduced at the campus in response to community needs, with continued expansion occurring due to local student and employer demand.

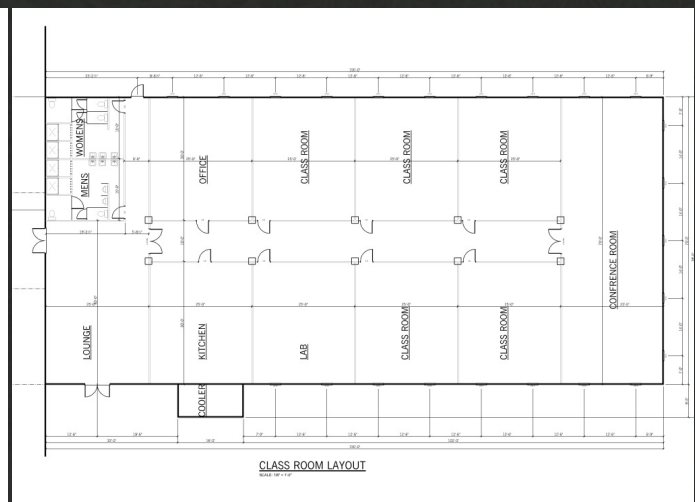
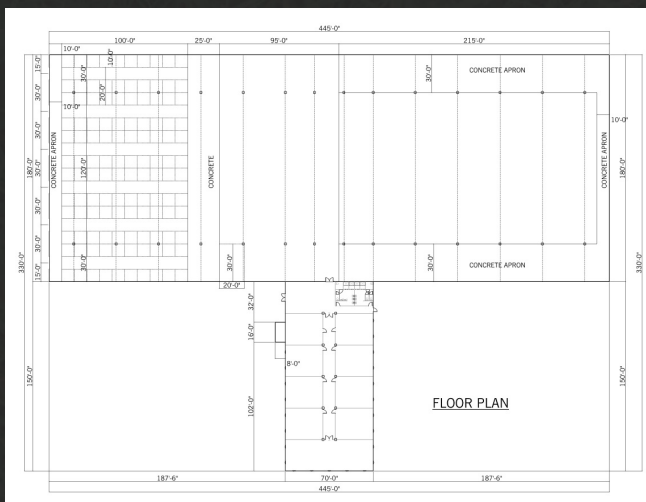




# PACE Center

## What is the PACE Center?

The PACE Center (Progressive Agricultural Convention and Education) Center will be a 180x445 foot exhibition center with a 70x150 foot educational wing. The building will feature a large indoor arena appropriate for horse/livestock exhibitions, large trade shows, special entertainment events, etc. The exhibition area will provide an opportunity for the region to host large events providing local entertainment and significant travel and tourism investment in the region. An educational wing will feature technologically equipped classrooms, a hands-on learning laboratory, student space, and offices for facility staff and other special needs. Wright State University Lake Campus and Ohio State University ATI will collaborate to expand agricultural education offerings through the PACE Center, meeting current and future agricultural industry training needs. Horse therapy programs will serve various populations of youth and adults seeking this growing and effective treatment option for physical, developmental, and emotional issues various audiences face.





# PACE Center

## Potential Benefits of the PACE Center:

The PACE (Progressive Agricultural Convention and Education) Center will serve as a catalyst for positive change and development in the Mercer County area:

- Regional, State, and National level livestock exhibition events will attract families and businesses involved in the production, marketing, and exhibition of horses, cattle, sheep, goats, llamas, and many other animals.
- The Exhibition Center will provide an avenue for local and regional agribusiness to conduct trade shows and educational events to market their items and attract additional business to the region.
- Various events ranging from livestock shows to concerts and special speakers will be hosted at the center, serving as a valuable entertainment option for individuals and families of all ages.



- The Center will serve as a tourism destination, with visitors supporting area restaurants, hotels, gas stations, and shops.
- College-based coursework will enable 50 students to annually enroll in Associates and Bachelor's Degree programs in Agriculture and Business-related fields enhancing the area's supply of skilled workforce.
- Area businesses will not only benefit from a skilled and trained workforce, but also utilize the educational classrooms and resources for employee training and development.
- Area agricultural producers not seeking degrees will be able to participate in training classes on topics ranging from farm financial management to animal nutrition and agronomic marketing.
- Youth members of various local 4-H and FFA chapters as well as other community groups will utilize the exhibition areas and classrooms for various training and meeting events.
- The center will serve as a focal point for positive development of the agricultural industry, bringing together the resources of Wright State University and Ohio State University ATI to meet local needs.
- Horse Therapy programs will serve youth and adults with challenges ranging from autism to physical disabilities. Horses have been proven to be a valuable and effective treatment tool for many audiences.



# PACE Center

## What people are saying:



"The addition of an expo center at the Mercer County fairgrounds will benefit not only our daughter and others who show animals at the fair, but also the areas collegiate agricultural education program. The building will see year-round use, bringing people to the fairgrounds and to our community. Horse and livestock shows could be hosted, and college classes could be held in such a versatile building. The opportunities for many generations to enjoy this facility are endless."  
-The Siefring Family

"I have gained so much knowledge in the past few years from the Ag program, at Wright State Lake, that I will carry with me wherever I go. There have been so many things from class trips abroad to Ag industry tours and guest speakers that have really increased my knowledge on the agriculture sector from a global perspective. The Ag Department at Wright State Lake focuses on getting students ready for the real world."

-Lisa Gehret, Kenn-Feld Group, Wright State Lake Campus Agriculture Program Graduate



"After growing up around agriculture, to pursue it during college was an easy choice. The Lake campus offered a great program that helped me obtain a position at Cooper Farms in Fort Recovery. I work close to home, with people I know, for an agricultural company that is proud of their quality products and continued innovation in the agricultural field."

-Jenessa Hufel, Cooper Farms, Wright State Lake Campus Agriculture Program Graduate

"The Ag program at the Lake Campus allowed me to go to school locally and still be able to work while pursuing my degree. The tours and activities allowed me to meet professionals in the industry that helped me to get started working in the field."

-Jason Reichert, TruPointe Coop & Reichert Dairy Farm, Wright State Lake Campus Agriculture Program Graduate





## 10 Reasons Why the Community Would Want to Support the 108,000 sq ft Progressive Agricultural Convention and Education Center:

This center will..

1. educate, keep, and return youth to the area
2. provide affordable advanced education programs
3. provide a horsemanship and wellness program, a proven benefit to equine assisted therapy
4. provide economic growth through diversification
5. become a progressive all-year weatherproof community resource center in conjunction with the beautiful county fairgrounds
6. provide a large weatherproof facility for community events
7. provide an all-year weatherproof riding facility for equestrians of all ages
8. provide a year around weatherproof facility for equine 4H activities that in the past have been "washed" out or not possible due to weather
9. provide new educational opportunities for residents reentering or revisiting the workforce
10. provide local commerce with well-rounded and educated personnel suited for their needs





# Donor Recognition

## PACE Setter Naming Opportunities

Arena - \$1,000,000  
Stall Area - \$500,000  
Food Processing Pilot Plant - \$250,000  
Conference Room - \$250,000  
Chemistry Lab-Based Classroom - \$200,000  
Microbiology Lab-Based Classroom - \$200,000  
Kitchen/Food Science Lab - \$200,000  
Technology Equipped Distance Education Classroom - \$150,000 each  
Offices (Faculty, Horse Therapy, Building Manager) - \$100,000 each  
Student Work Center/Office - \$100,000  
Lobby Area - \$100,000

## Levels

PACE Setter (100,000 or higher) Naming Opportunity Large Signage in Arena, & Lobby Display  
Platinum Donor (25,000) Medium Signage in Arena & Lobby Display  
Diamond Donor (10,000) Small Signage in Arena & Lobby Display  
Gold Donor (5,000) Large Block Tile in Walkway & Lobby Display  
Silver (1,000) Medium Block Tile in Walkway & Lobby Display  
Bronze (500) Small Block Tile in Walkway & Lobby Display

Donations can be pledged over a five year period. Project construction will begin when campaign reaches 80% pledge rate of expected total project costs.

The Mercer County Agricultural Society (Fair Board) is a 501c3 non-profit organization  
Campaign Account is available at Peoples Bank Company. To Discuss Campaign Donations contact:  
Campaign Chair: Lisa Niekamp Urwin ([lurwin@ttecht.com](mailto:lurwin@ttecht.com))  
Co-Chair: Luke VanTilburg ([luke@vantilburgfarms.com](mailto:luke@vantilburgfarms.com))  
Co-Chair: Tom Schlenker ([tpschlen@bright.net](mailto:tpschlen@bright.net))  
Campaign Finance Chair: Dale Schwieterman ([dschwieterman@mccrate.com](mailto:dschwieterman@mccrate.com))  
Mercer County Fair Manager: Cara Muhlenkamp ([cmuhlenkamp@mercercountyohiofair.com](mailto:cmuhlenkamp@mercercountyohiofair.com))  
Wright State Lake Campus Agriculture Program: Dr. Greg Homan ([greg.homan@wright.edu](mailto:greg.homan@wright.edu))  
Wright State Lake Campus Food Science Program: Dr. Courtney Simons  
([Courtney.simons@wright.edu](mailto:Courtney.simons@wright.edu))